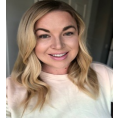




**PLEASE JOIN US FOR OUR MONTHLY
LUNCH & LEARN
Tuesday, April 26, 2022**



**Topic:
Provider Fraud Prosecutions Reality Check**

**Keynote Speakers:
ERIKA MULHERE**

**Deputy District Attorney, Special Prosecutions Section
Riverside County District Attorney's Office**

KRISTEN ALLISON

**Deputy District Attorney, Financial Crimes & In-House Counsel Units
Riverside County District Attorney's Office**

This training will discuss what to expect as a provider fraud case works its way through the criminal justice system, including anticipated litigation, defense attorney tactics, and other roadblocks along the way.

Erika L. Mulhere is a Deputy District Attorney at the Riverside County District Attorney's Office working in the Special Prosecutions Section. She received a J.D. and M.B.A from Chapman University in 2007. As part of her current assignment, DDA Mulhere handles various complex multi-million dollar welfare and healthcare fraud cases countywide. Prior to her time in the Special Prosecutions Section, DDA Mulhere prosecuted various cases as part of the Violent Crimes Division and Narcotics Unit as well as Grand Theft Auto and Major Fraud.

Kristen Allison has been a Deputy District Attorney at the Riverside County District Attorney's Office for 13 years. She received her B.A. in Political Science from Chapman University and her J.D. from California Western School of Law. She has experience prosecuting offenders for a wide-range of crimes, including domestic violence, theft, robbery, drugs, and sex offender violations. For the past four years DDA Allison has specialized in prosecuting complex financial crimes, including workers' compensation provider fraud and public corruption cases. DDA Allison is also a member of RCDA's In House Counsel Unit, with a focus on implementing new legislation.



**Sheraton Cerritos Hotel
12725 Center Ct Dr. S
Cerritos, CA 90703**

11:00 a.m. – Registration & Networking

12:00 Noon - Lunch & Presentation

1:30 p.m. – Raffle Drawings (You're welcome to bring a Raffle Gift-Attach your business card)

2:00 p.m. – Adjourn

**For Sponsorship/Exhibitor opportunities, please contact Laura Clifford
lauraclifford@sbcglobal.net Cell 323.559.0015**

Online Registration www.fraudtaskforce.org

_____ \$55.00 EFTF Members in Advance _____ \$65.00 Non-Member in Advance
_____ \$75.00 At the Door without pre-registration \$ _____ Total Amount Enclosed
Payable by check to: Employers' Fraud Task Force